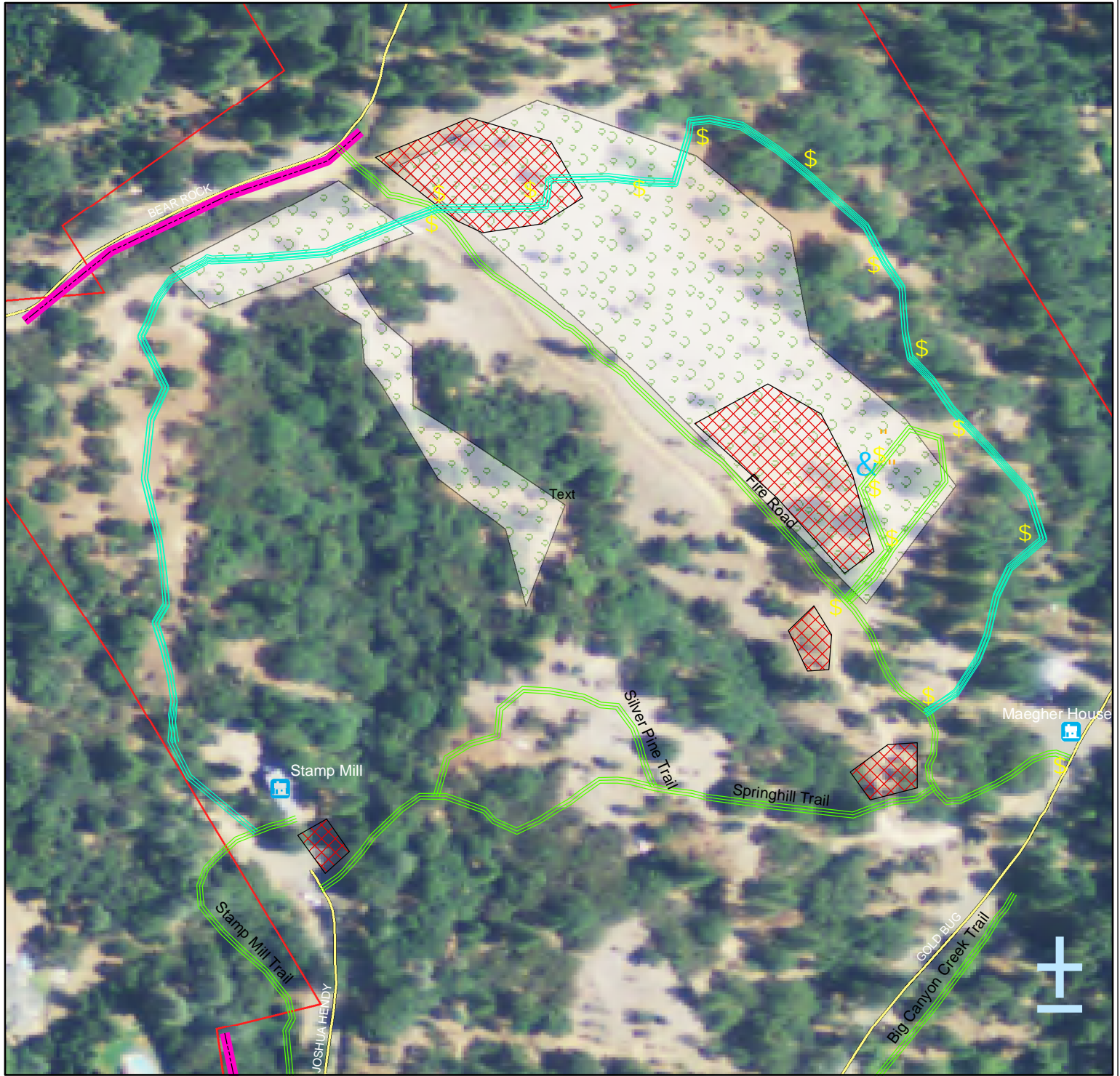


# Gold Bug Park Restoration Project

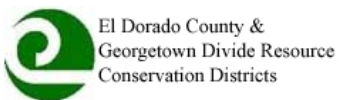
Date: 5-26-2011

Total Acres: 61  
 Total Existing Trails: 1.43  
 Proposed New Trail: 0.56

Field Office: Placerville Service Center  
 Agency: RCD  
 Image: 2009 NAIP Imagery



0 0.01 0.02 0.04 0.06 0.08 Miles



- |                    |                      |               |
|--------------------|----------------------|---------------|
| Proposed new trail | Potential Fencing    | Air Shaft     |
| Existing trails    | Re-Veg Zones         | Gift Shop     |
| Signage            | Invasive Plants      | Maegher House |
| Tables             | Gold_Bug_Park_Parcel | Stamp Mill    |
| Baltic Tower       |                      |               |

1:2,000

The El Dorado County and Georgetown Divide Resource Conservation Districts (RCD) make no representations or warranties regarding the accuracy of data or maps. The RCD shall not be liable under any circumstances for any direct, special incidental, or consequential damages with respect to any user or third party on account of or arising from the use of data or maps.



Gold Bug Park